



1000W UP TO 3000W FIBER LASER

Item	Specification	Unit
Working range (X x Y)	3000 x 1500	mm
X-axis stroke(single clamp)	6200	mm
X'- axis stroke	50	mm
Y-axis stroke	1540	mm
Z-axis stroke	80	mm
Max. speed clamp X-axis	90	m/min
Max. speed Y-axis	90	m/min
Max. speed Z-axis	45	m/min
Max. acceleration X-axis	10	m/s ²
Max. acceleration Y-axis	20	m/s ²
Max. acceleration Z-axis	25	m/s ²
Positioning accuracy	±0.05	mm
Position deviation	±0.03	mm
Sheet thickness	0.5~6	mm
Max. sheet weight	250	kg
Mini. part for sorting dimensions	200 x 200	mm
Mini. part for drop door dimensions	50 x 1500	Mm2
Max. sorting height	300	mm
Max. raw sheet height	250	mm
Max. loading table capacity	3000	kg
Max. robot travel speed	180	m/min
Machine weight	15000	kg
Machine dimensions (L x W x H)	16300 x 7280 x 3680	mm

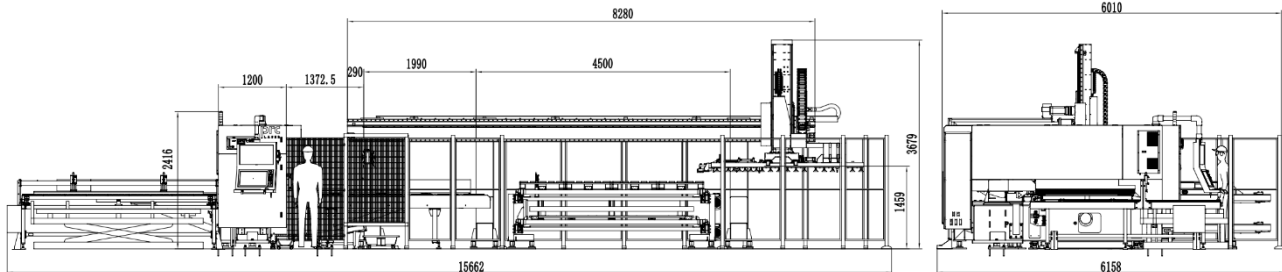
ELECTRICAL INSTALLATION REQUIREMENTS

Item	Specification	Unit
Power supply	3 x 380	V
Net frequency	50	Hz

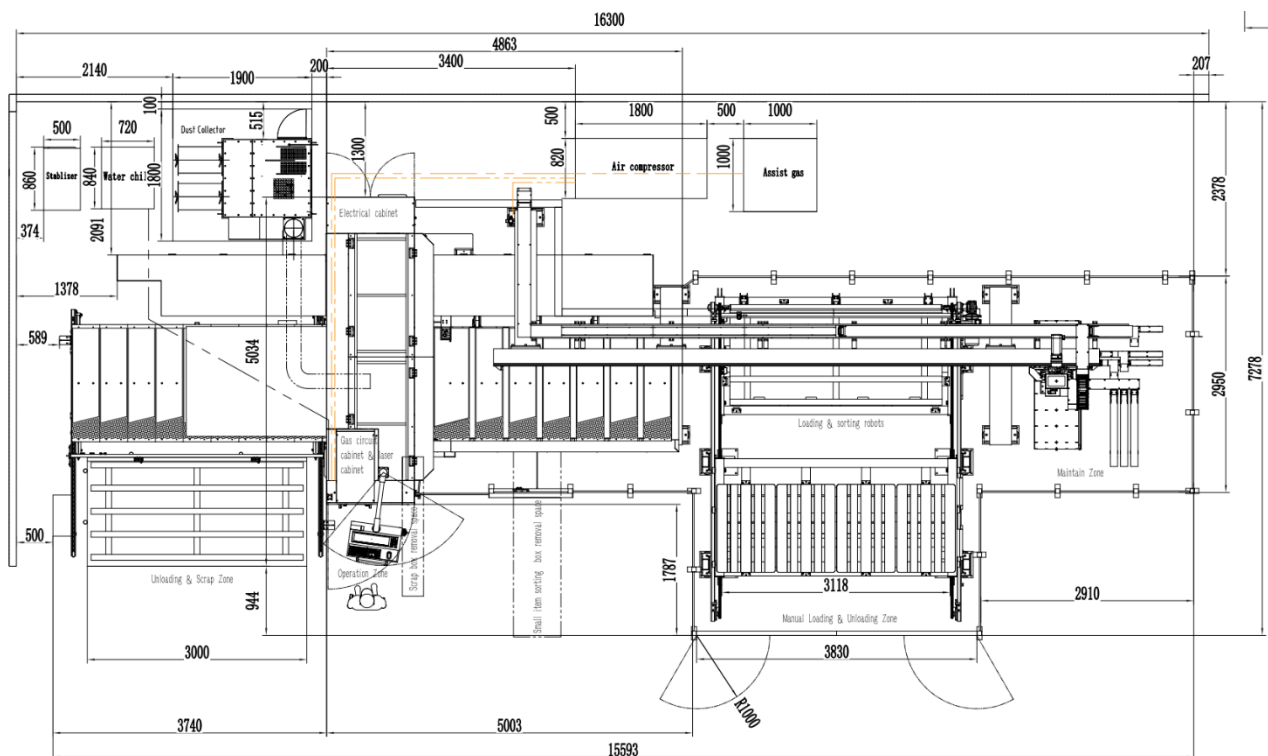
For more information contact sales.europe@prclaser.com

www.prclaser-europe.be

MACHINE LAY-OUT



NOTE: Machine layout is for reference only, complete lay-out depends on the configuration of laser source, chiller, dust collector and depends on your specific requirements!



- **The PRC Laser M315 is a fully automatic high-dynamic 2D laser cutting machine designed for sheet metal formats of 3m x 1.5m.**
- **Parallel kinematic cutting head reduces the cutting time of small features.**
- **The brush support design allows scratch free cutting process which could meet high requirements of surface quality.**
- **Especially designed for Fiber laser beam delivery, up to 3kW.**
- **Smaller parts are handled by drop-door and conveyor.**
- **Flexible loading & sorting robot leave no limit of part unloading.**
- **Unloading table stacks the skeleton, leaves no trouble to operator.**

For more information contact sales.europe@prclaser.com

www.prclaser-europe.be