

MW-Series

Hand-Held Fiber Laser Welding

MW-1000/1500/2000



Welding capacity

Fiber Laser Power	1000W	1500W	2000W
Aluminum (mm)	1.5	2	3
Stainless Steel (mm)	2	3	3.5
Carbon Steel (mm)	2	3	3.5

Applications

Used in welding of hardware, home appliances, furniture, kitchen & sanitary ware, batteries, lighting equipment, door & window guardrails, elevators, medical equipment, electrical cabinets, etc...



Metal Furniture



Electrical Cabinet



Elevator Manufacturing



Door/Window Guardrail



Battery Welding



Kitchenware



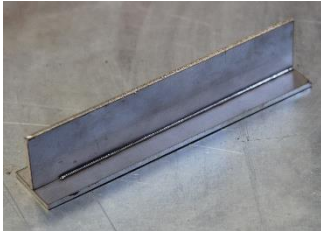
Light & Decoration

For more information contact sales.europe@prclaser.com

www.prclaser-europe.be

PRC LASER EUROPE NV • Industriepark De Bruwaan 89B • B-9700 Oudenaarde, Belgium • Phone (+32) 55 30 31 96
 WB-PRC LASER SERVICE GmbH • Münchner Str. 15b • DE-85604 Zorneding, Germany • Phone (+49) 8406 306 26-0
 PRC LASER CORPORATION • 4279-K Crosspoint Drive • Ladson, South Carolina 29456, USA • Phone (+1) 973 347 01 00

Welding Samples



Stainless Steel Welding



Aluminum Welding



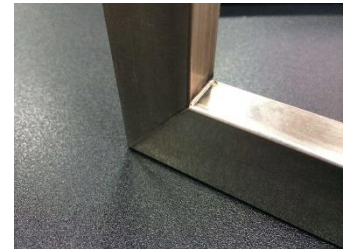
Mild Steel Welding



Pipe Construction Welding



Exhaust Welding



Construction Welding

- **Compact Design, “all-in-one”:** laser, chiller, operator’s touchscreen control, gas flow, with a Fiber cable of 15 m, offering high flexibility and high weld quality.
- **Controller unit offers QCW (quasi-continuous-wave), PWM (pulse) and CW (continuous) modes, parameter database, safety functions, shielding gas control.**
- **Easy-to-use interface, no special training needed. Suitable to weld stainless steel, mild steel, aluminum & other materials.**

Equipment Info:

Dimensions: 1600 (L) X1100 (W) X1650 (H) mm .

Net weight: 250KGS



For more information contact sales.europe@prclaser.com

www.prclaser-europe.be